

**Aldreds**  
Estate Agents



158 Beach Road Chalet Park Beach Road

Scratby, NR29 3NW

£35,000





## 158 Beach Road Chalet

Aldreds are pleased to offer this well presented, three bedroom, two storey mid terraced holiday chalet situated in this popular chalet site situated in a prime spot yards from the main site amenities. Accommodation comprises of an entrance hall, three ground floor bedrooms, first floor open plan living space, kitchen and bathroom. The property also benefits from double glazed windows and is being sold furnished and equipped. This well located site offers communal lawned grounds, parking, outdoor heated swimming pool and childrens play area all within yards of the property. The Scratby Beach is dog friendly. View early to avoid disappointment.

### Entrance Hall

Part double glazed pvc entrance door, stairs to first floor with under stairs cupboard, electric heater, meter cupboard, doors leading off to:

### Bedroom 1

10'0" x 9'10" (3.06 x 3.02)

Double glazed window to rear aspect, fitted carpet, double bed, wardrobes.

### Bedroom 2

8'5" x 7'8" (2.57 x 2.36)

Double glazed window to front aspect, double bed, fitted carpet, wardrobes.

### Bedroom 3

6'11" x 5'2" (2.11 x 1.60)

Double glazed window to rear aspect, bunk beds, fitted carpet.

### First Floor

### Open Plan Living Space

13'5" x 12'7" (4.09 x 3.86)

Including the stairwell, double glazed window to front aspect, power points, tv point, fitted carpet, sofa and arm chairs, drop leaf table and chairs, door to bathroom, open plan access to:-

### Kitchenette

6'9" x 5'6" (2.08 x 1.68)

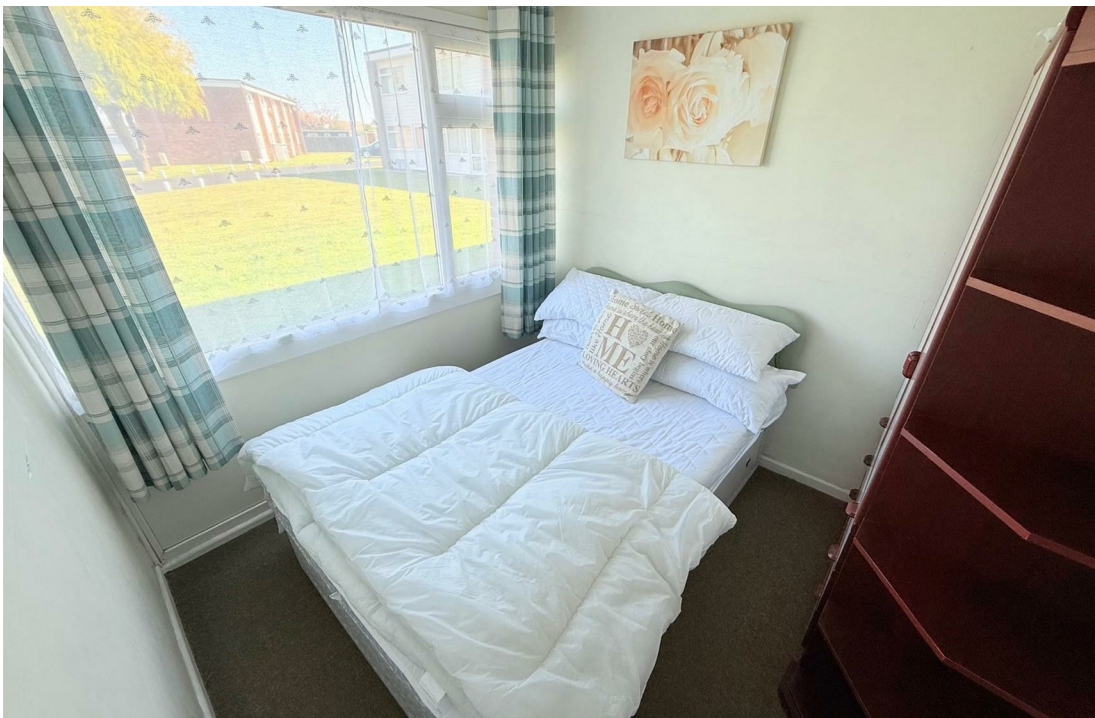
Double glazed window to rear aspect, range of fitted white gloss finish wall and matching base kitchen units with roll top granite effect work surfaces over, tiled walls, stainless steel sink and drainer, built in electric over and four ring ceramic hob, fridge/freezer.

### Bathroom

White suite comprising panelled bath with electric shower fitting over, mainly tiled walls. low level wc, pedestal wash basin, frosted double glazed window to rear aspect.







### Outside

The chalet sits in a nice position in well maintained communal grounds with easy access to the site car parking area, childrens play area and outdoor swimming pool. There are also close by amenities including laundry, chip shop, pub etc.

### Tenure

Leasehold.

99 years from 1st October 1972

Site fees for 2024/2025 £1,653.19 (breakdown on request)

Site open from 1st March to 31st October

Dogs are allowed must be kept on a lead.

### Services

Mains water, electric and drainage.

### Council Tax

Great Yarmouth Borough Council - Band 'A'

### Location

California, Scratby is a coastal village approximately 5 miles north of Great Yarmouth. It has a Sandy beach backed by cliffs \* Garden centre with general provisions store \* First, Middle and High Schools are available in neighbouring village of Caister on Sea. Local bus services operate between the coastal villages and Great Yarmouth.

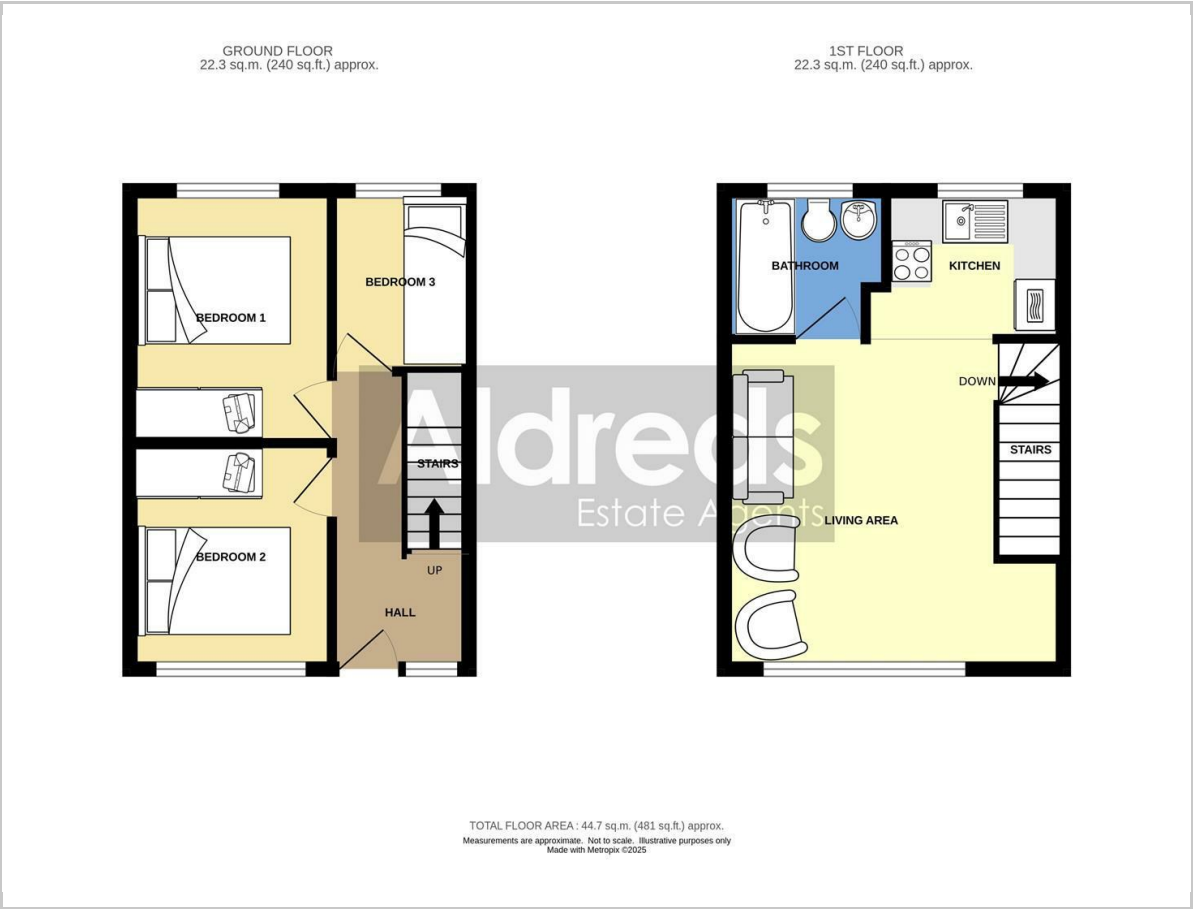
### Directions

From the Yarmouth office head north the A149 Caister Road, continue past the Yarmouth Stadium at the roundabout take the left hand exit onto the Caister Bypass, continue over the next roundabout onto the single carriageway of the Caister Bypass, at the Grange Hotel roundabout take the second exit, Scratby Road, turn right at the Scratby Garden Centre into Beach Road, turn left into Beach Road Chalet Park where the chalet can be found almost immediately on the right hand side.

Ref: Y12398/5/25/SV



Floor Plan

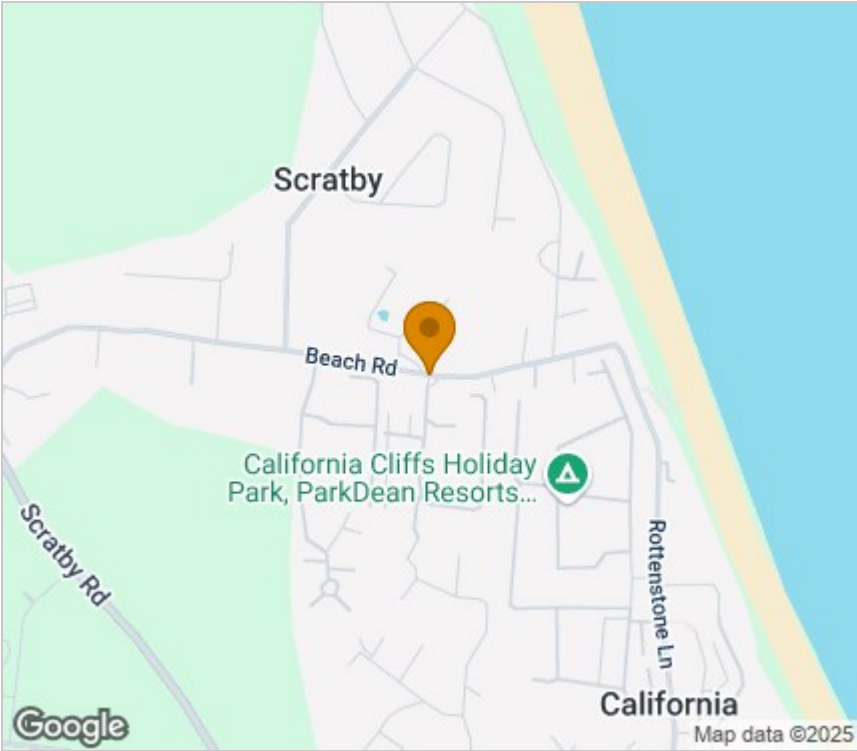


Viewing

Please contact our Aldreds Great Yarmouth Office on 01493 844891 if you wish to arrange a viewing appointment for this property or require further information.

Disclaimer  
These particulars are issued on an understanding that all negotiations shall be conducted through Messrs. Aldreds. Please note: Messrs. Aldreds for themselves and for the vendors or lessors of this property whose agents they are given notice that: 1. Particulars are set out as a general outline only for guidance of intending purchasers or lessees, and do not constitute nor constitute part of, an offer or contract. 2. All descriptions, dimensions, references to condition and necessary permissions for use and occupation, and other details are given without responsibility and any intending purchasers or tenants should not rely on them as statements or representations of fact but must satisfy themselves by inspection or otherwise as to the correctness of each of them. 3. No person in the employment of Messrs. Aldreds has any authority to make or give any representation or warranty whatever in relation to this property. 4. If you are proposing to visit the property and are travelling some distance please check with Aldreds on the issue of availability prior to travelling. 5. Aldreds Property Consultants and associated services may offer additional services to the prospective purchaser for which they will be entitled to receive a commission. Aldreds are pleased to be working with Mortgage Advice Bureau. They're an award-winning mortgage broker with over 1,400 advisers across the UK, and have access to over 12,000 mortgage products from over 90 lenders. Aldreds Estate Agents Ltd receive a commission of £200 on each completed case. Your home may be repossessed if you do not keep up repayments on your mortgage. There may be a fee for mortgage advice. The actual amount you pay will depend upon your circumstances. The fee is up to 1%, but a typical fee is 0.3% of the amount borrowed. Mortgage Advice Bureau is a trading name of Mortgage Seeker Limited which is an appointed representative of Mortgage Advice Bureau Limited and Mortgage Advice Bureau (Derby) Limited which are authorised and regulated by the Financial Conduct Authority. Mortgage Seeker Limited Registered Office: Lovewell Blake, Sixty Six North Quay, Great Yarmouth, Norfolk, NR30 1HE. Registered in England Number: 03721415. 6. Potential purchasers should check with their providers that the broadband and mobile phone coverage they would require is available.

Area Map



Energy Efficiency Graph

